

# Solar Wind Around Pluto

## SWAP

PRINCIPAL INVESTIGATOR  
Dave McComas, SwRI

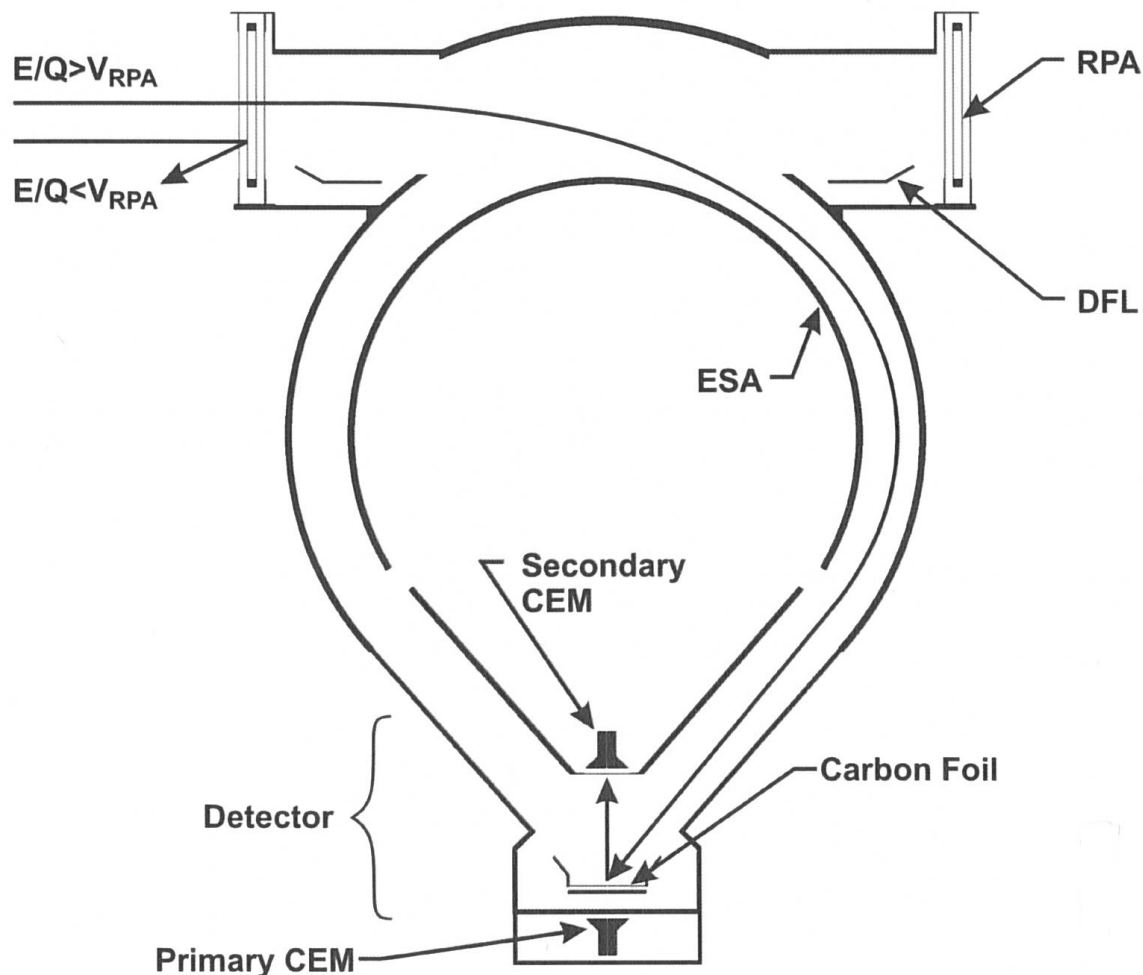
DESCRIPTION  
Low Energy Plasma Instrument

ENERGY RANGE  
30 eV - 7.7 keV

FIELD OF VIEW  
270 deg x 10 deg  
(deflection angles up to +15 deg)

ENERGY RESOLUTION  
1 eV (< 2 keV); 9% (> 2 keV)

SPECIES  
All Ions



# New Horizons SWAP Data Sets

RAW ->

nh-j-swap-2-jupiter-v3.0  
nh-x-swap-2-plutocruise-v2.0

CALIBRATED ->

nh-j-swap-3-jupiter-v3.0  
nh-x-swap-3-plutocruise-v2.0

# New Horizons SWAP Data Set Evaluation Tools

Staging and Evaluation -

Machine: Dell Precision T3400

Operating System: Fedora 18 linux

Data Processing -

Machine: Sun Ultra-350

Operating System: Sun Solaris OS 5.9

Minor Diagnostics -

Machine: IBM lenovo T60p ThinkPad

Operating System: Fedora 20 linux

# Documentation Evaluation





# Inconsistent File Name Definition - 3

From aareadme.txt:

```
Note that, depending on the observation, the SCRMET in the data filename and in the Product ID may be similar to the Mission Elapsed Time (MET) of the actual observation acquisition, but should not be used as an analog for the acquisition time. The SCRMET is the time that the data are transferred from the instrument to spacecraft memory and is therefore not a reliable indicator of the actual observation time. The PDS label
```

Note that MET is not the same as SCRMET.

The ICD makes no reference to SCRMET.

nh-x-pepssi-2-plutocruise-v1.0/catalog  
nh-x-pepssi-3-plutocruise-v1.0/catalog  
nhsc.cat

► Unable to locate Figure 5:

The 16 rocket engine assemblies (REAs) are organized into 8 sets and placed on the spacecraft as shown in Figure 5. Pairs of the 0.8N

► Unable to locate Table II:

rates allowed during this operation mode. Control rates for each of the spacecraft axes are shown below in Table II. One pair of the 4.4N



nh-j-swap-2-jupiter-v3.0/, nh-j-swap-3-jupiter-v3.0/,  
nh-x-swap-2-plutocruise-v2.0/, nh-x-swap-3-plutocruise-v2.0/  
catalog/ref.cat

## ► Incomplete Journal Specification:

```
OBJECT                = REFERENCE
REFERENCE_KEY_ID     = "ANDREWSETAL1998"
REFERENCE_DESC       = "
Andrews, G.B., Robert E. Gold, Edwin P. Keath, Donald G. Mitchell, Richard W.
McEntire, Ralph L. McNutt, Jr., Nicholas P. Paschalidis, Compact particle
detector for space measurements: prototype performance, Proceedings Vol. 3442
Missions to the Sun II, Clarence M. Korendyke, Editors, pp.105-114, 1998.
"
END_OBJECT           = REFERENCE
```

Should site "Proceedings SPIE" as the journal.

## ► Incorrect Reference Year:

```
OBJECT                = REFERENCE
REFERENCE_KEY_ID     = "BELTONETAL2002"
REFERENCE_DESC       = "
Belton, M. J., et al., New Frontiers in the Solar System. An Integrated
Exploration Strategy, National Research Council, 145 pp, 2002.
"
END_OBJECT           = REFERENCE
```

Can not find a 2002 reference which has more than 100 pages. There is a 2003 reference which exceeds 145 pages.

nh-j-swap-2-jupiter-v3.0/, nh-j-swap-3-jupiter-v3.0/,  
nh-x-swap-2-plutocruise-v2.0/, nh-x-swap-3-plutocruise-v2.0/  
catalog/ref.cat - 2

► SwRI library unable to locate the following references:

```
OBJECT                = REFERENCE
  REFERENCE_KEY_ID    = "DSN810-5"
  REFERENCE_DESC      = "
Deep Space Network / Flight Project Interface Design Book, JPL-D-810-5, Jet
Propulsion Laboratory, Pasadena, CA 2003.
"
END_OBJECT            = REFERENCE

OBJECT                = REFERENCE
  REFERENCE_KEY_ID    = "DSN821-104"
  REFERENCE_DESC      = "
Deep Space Mission Systems, Tracking and Navigation Service, Requirements and
Design, DSMS No. 821-104, Rev. B, JPL D-17235, Jet Propulsion Laboratory,
Pasadena, CA, 2003.
"
END_OBJECT            = REFERENCE

OBJECT                = REFERENCE
  REFERENCE_KEY_ID    = "DSN821-110"
  REFERENCE_DESC      = "
Deep Space Mission Systems, Radio Science Service, Requirements and Design,
DSMS No. 821-110, Rev. A, JPL D-17241, Jet Propulsion Laboratory, Pasadena,
CA, 2001.
"
END_OBJECT            = REFERENCE
```

nh-j-swap-2-jupiter-v3.0/, nh-j-swap-3-jupiter-v3.0/,  
nh-x-swap-2-plutocruise-v2.0/, nh-x-swap-3-plutocruise-v2.0/  
document/ soc\_inst\_icd\_intro.pdf and soc\_inst\_icd\_acroabbr.pdf

A test was conducted on the ICD intro pdf to determine if an acronym was included within the ICD acroabbr pdf file. The acronym chosen was “CM” and occurs on page 6, section 6.6, line 3 of the ICD intro pdf. This acronym was not found in the acroabbr pdf file.

nh-j-swap-2-jupiter-v3.0/, nh-j-swap-3-jupiter-v3.0/,  
nh-x-swap-2-plutocruise-v2.0/, nh-x-swap-3-plutocruise-v2.0/  
document/ soc\_inst\_icd\_swap.pdf

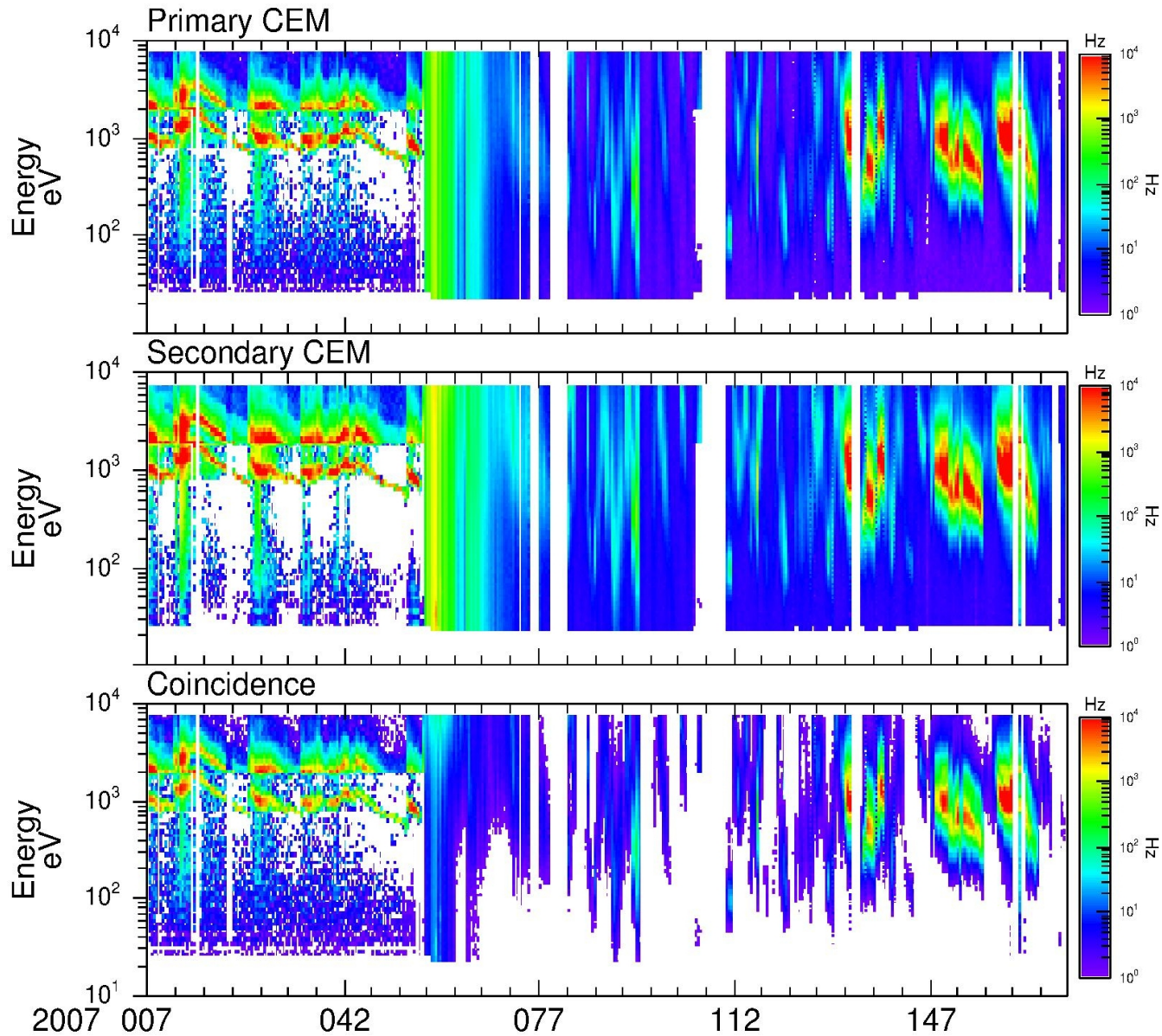
- ▶ On page 133, there is an incorrect reference to the level 3 Figure 14-7 when it should be to the level 2 Figure 14-5.
- ▶ The file SWAP\_level2\_C\_IdL\_10152012.pdf was not found; however, it was unclear if this file should be in the archive (last line of section 14.8).

# Data Evaluation

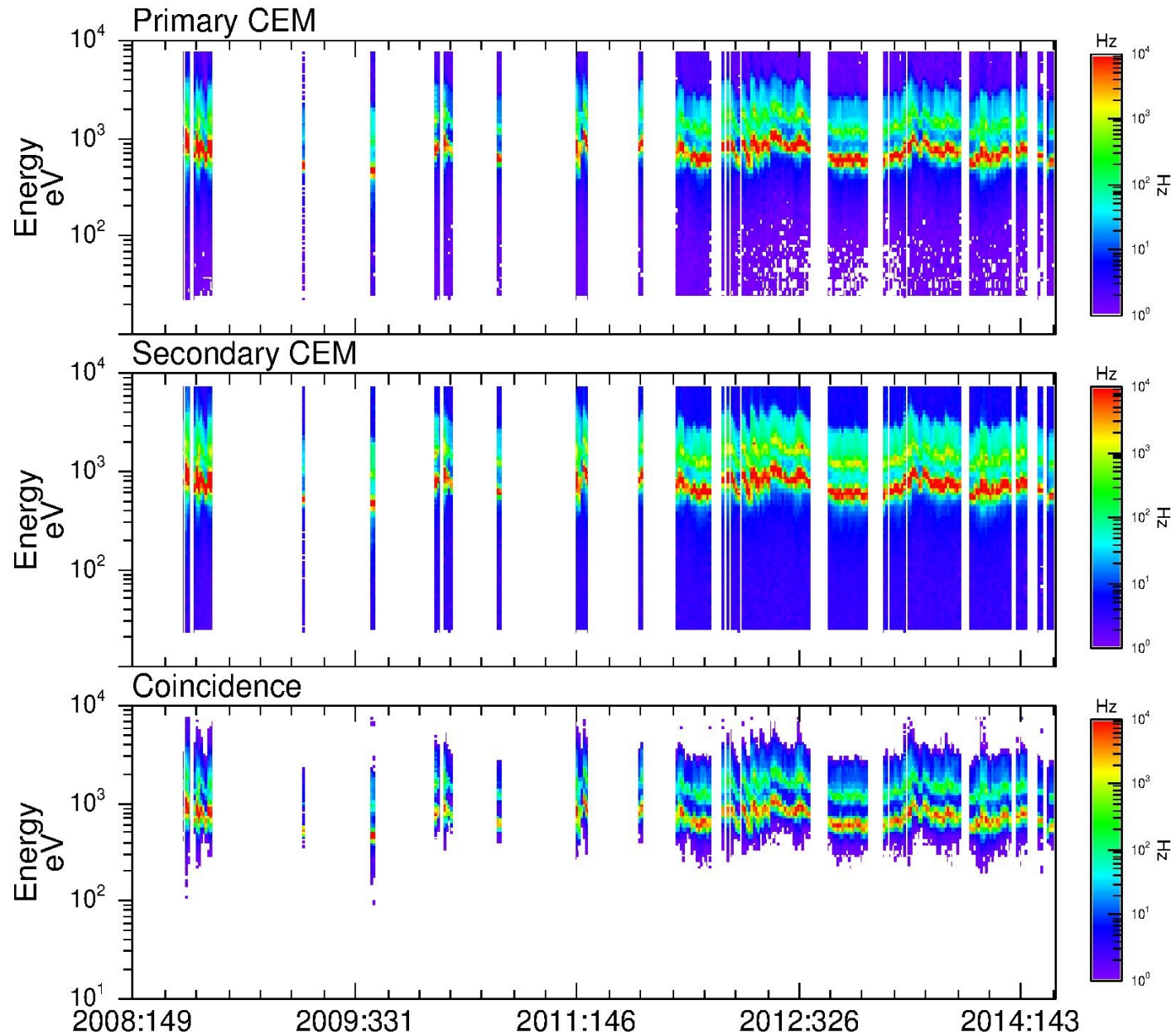
# Science Data Samples

As a special note, the science data samples plots in the document/data\_summary\_plots were very helpful as the evaluator had issues with the FITS Viewer (FV).

# SWAP Science - Jupiter



# SWAP Science Pluto Cruise





# Back-Up Slides

nh-j-swap-2-jupiter-v3.0  
nh-j-swap-3-jupiter-v3.0  
nh-x-swap-2-plutocruise-v2.0  
nh-x-swap-3-plutocruise-v2.0  
errata.txt

**GOOD**

nh-j-swap-2-jupiter-v3.0  
nh-j-swap-3-jupiter-v3.0  
nh-x-swap-2-plutocruise-v2.0  
nh-x-swap-3-plutocruise-v2.0  
voldec.cat

GOOD

nh-j-swap-2-jupiter-v3.0/, nh-j-swap-3-jupiter-v3.0/,  
nh-x-swap-2-plutocruise-v2.0/, nh-x-swap-3-plutocruise-v2.0/  
catalog/catinfo.txt

**GOOD**

nh-j-swap-2-jupiter-v3.0/, nh-j-swap-3-jupiter-v3.0/,  
nh-x-swap-2-plutocruise-v2.0/, nh-x-swap-3-plutocruise-v2.0/  
catalog/swap.cat

**GOOD**

nh-j-swap-2-jupiter-v3.0/, nh-j-swap-3-jupiter-v3.0/,  
nh-x-swap-2-plutocruise-v2.0/, nh-x-swap-3-plutocruise-v2.0/  
catalog/nh.cat

**GOOD**

nh-j-swap-2-jupiter-v3.0/, nh-j-swap-3-jupiter-v3.0/,  
nh-x-swap-2-plutocruise-v2.0/, nh-x-swap-3-plutocruise-v2.0/  
catalog/dataset.cat

- ▶ See note on Inconsistent File Name Definition
- ▶ Minor Corrections Sent to PDS/SBN

nh-j-swap-2-jupiter-v3.0/, nh-j-swap-3-jupiter-v3.0/,  
nh-x-swap-2-plutocruise-v2.0/, nh-x-swap-3-plutocruise-v2.0/  
calib/calinfo.txt

**GOOD**



nh-j-swap-2-jupiter-v3.0/, nh-j-swap-3-jupiter-v3.0/,  
nh-x-swap-2-plutocruise-v2.0/, nh-x-swap-3-plutocruise-v2.0/  
calib/ rpa\_shape.lbl and rpa\_shape.tab

**GOOD**

nh-j-swap-2-jupiter-v3.0/, nh-j-swap-3-jupiter-v3.0/,  
nh-x-swap-2-plutocruise-v2.0/, nh-x-swap-3-plutocruise-v2.0/  
calib/ list\_energy\_files.lbl and list\_energy\_files.tab

**GOOD**

nh-j-swap-2-jupiter-v3.0/, nh-j-swap-3-jupiter-v3.0/,  
nh-x-swap-2-plutocruise-v2.0/, nh-x-swap-3-plutocruise-v2.0/  
calib/ fov\_mask\_2d.lbl and fov\_mask\_2d.tab

**GOOD**

nh-j-swap-2-jupiter-v3.0/, nh-j-swap-3-jupiter-v3.0/,  
nh-x-swap-2-plutocruise-v2.0/, nh-x-swap-3-plutocruise-v2.0/  
calib/ esa\_shape.tbl and esa\_shape.tab

**GOOD**

nh-j-swap-2-jupiter-v3.0/, nh-j-swap-3-jupiter-v3.0/,  
nh-x-swap-2-plutocruise-v2.0/, nh-x-swap-3-plutocruise-v2.0/  
calib/ esa\_rpa\_v19\_energy\_binsf\_new2.lbl and  
esa\_rpa\_v19\_energy\_binsf\_new2.tab

**GOOD**

nh-j-swap-2-jupiter-v3.0/, nh-j-swap-3-jupiter-v3.0/,  
nh-x-swap-2-plutocruise-v2.0/, nh-x-swap-3-plutocruise-v2.0/  
calib/ esa\_rpa\_v18\_energy\_binsf\_new.lbl and  
esa\_rpa\_v18\_energy\_binsf\_new.tab

**GOOD**

nh-j-swap-2-jupiter-v3.0/, nh-j-swap-3-jupiter-v3.0/,  
nh-x-swap-2-plutocruise-v2.0/, nh-x-swap-3-plutocruise-v2.0/  
calib/ esa\_rpa\_v16\_energy\_binsf\_new.lbl and  
esa\_rpa\_v16\_energy\_binsf\_new.tab

**GOOD**

nh-j-swap-2-jupiter-v3.0/, nh-j-swap-3-jupiter-v3.0/,  
nh-x-swap-2-plutocruise-v2.0/, nh-x-swap-3-plutocruise-v2.0/  
calib/ background\_009\_dac.tbl and background\_009\_dac.tab

**GOOD**



nh-j-swap-2-jupiter-v3.0/, nh-j-swap-3-jupiter-v3.0/,  
nh-x-swap-2-plutocruise-v2.0/, nh-x-swap-3-plutocruise-v2.0/  
calib/ background\_009\_dac\_jup.lbl and  
background\_009\_dac\_jup.tab

**GOOD**

nh-j-swap-2-jupiter-v3.0/, nh-j-swap-3-jupiter-v3.0/,  
nh-x-swap-2-plutocruise-v2.0/, nh-x-swap-3-plutocruise-v2.0/  
document/ aareadme\_bu.txt

- ▶ See note on Inconsistent File Name Definition
- ▶ Minor Corrections Sent to PDS/SBN

nh-j-swap-2-jupiter-v3.0/, nh-j-swap-3-jupiter-v3.0/,  
nh-x-swap-2-plutocruise-v2.0/, nh-x-swap-3-plutocruise-v2.0/  
document/ docinfo.txt

- ▶ See note on Inconsistent File Name Definition
- ▶ Minor Corrections Sent to PDS/SBN

nh-j-swap-2-jupiter-v3.0/, nh-j-swap-3-jupiter-v3.0/,  
nh-x-swap-2-plutocruise-v2.0/, nh-x-swap-3-plutocruise-v2.0/  
document/ lunineetal1995.lbl and lunineetal1995.pdf

GOOD

nh-j-swap-2-jupiter-v3.0/, nh-j-swap-3-jupiter-v3.0/,  
nh-x-swap-2-plutocruise-v2.0/, nh-x-swap-3-plutocruise-v2.0/  
document/ nh\_fov.lbl and nh\_fov.png

GOOD

nh-j-swap-2-jupiter-v3.0/, nh-j-swap-3-jupiter-v3.0/,  
nh-x-swap-2-plutocruise-v2.0/, nh-x-swap-3-plutocruise-v2.0/  
document/ nh\_met2utc.tbl and nh\_met2utc.tab

GOOD

nh-j-swap-2-jupiter-v3.0/, nh-j-swap-3-jupiter-v3.0/,  
nh-x-swap-2-plutocruise-v2.0/, nh-x-swap-3-plutocruise-v2.0/  
document/ nh\_mission\_trajectory.tbl and  
nh\_mission\_trajectory.tab

GOOD

nh-j-swap-2-jupiter-v3.0/, nh-j-swap-3-jupiter-v3.0/,  
nh-x-swap-2-plutocruise-v2.0/, nh-x-swap-3-plutocruise-v2.0/  
document/ nh\_trajectory.tbl and nh\_trajectory.tab

GOOD



nh-j-swap-2-jupiter-v3.0/, nh-j-swap-3-jupiter-v3.0/,  
nh-x-swap-2-plutocruise-v2.0/, nh-x-swap-3-plutocruise-v2.0/  
document/ payload\_ssr.lbl and payload\_ssr.pdf

GOOD

nh-j-swap-2-jupiter-v3.0/, nh-j-swap-3-jupiter-v3.0/,  
nh-x-swap-2-plutocruise-v2.0/, nh-x-swap-3-plutocruise-v2.0/  
document/ pdsdd\_insert\_newhorizons.txt

GOOD

nh-j-swap-2-jupiter-v3.0/, nh-j-swap-3-jupiter-v3.0/,  
nh-x-swap-2-plutocruise-v2.0/, nh-x-swap-3-plutocruise-v2.0/  
document/ quat\_axyz\_instr\_to\_j2k.lbl and  
quat\_axyz\_instr\_to\_j2k.asc

**GOOD**

nh-j-swap-2-jupiter-v3.0/, nh-j-swap-3-jupiter-v3.0/,  
document/ seq\_swap\_jupiter.lbl and seq\_swap\_jupiter.tab

**GOOD**

nh-x-swap-2-plutocruise-v2.0/, nh-x-swap-3-plutocruise-v2.0/  
document/ seq\_swap\_plutocruise.lbl and  
seq\_swap\_plutocruise.tab

**GOOD**