

Rosetta MIDAS PDS Review

A Steele

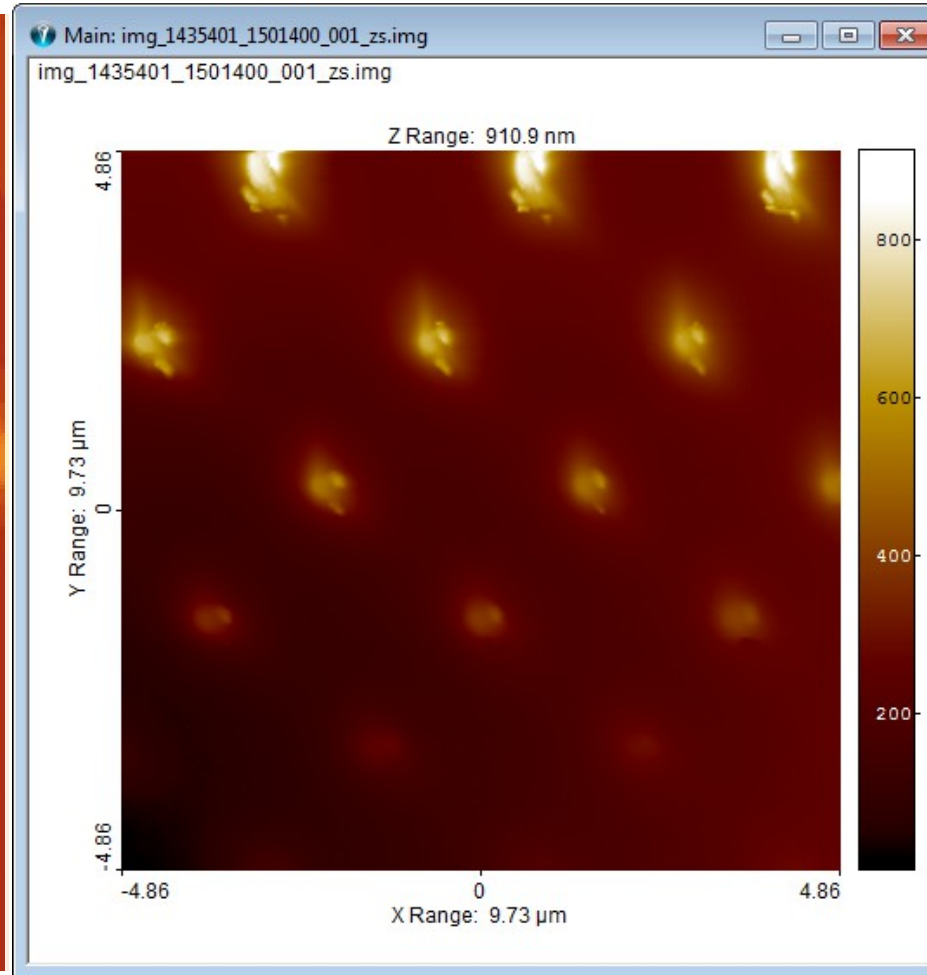
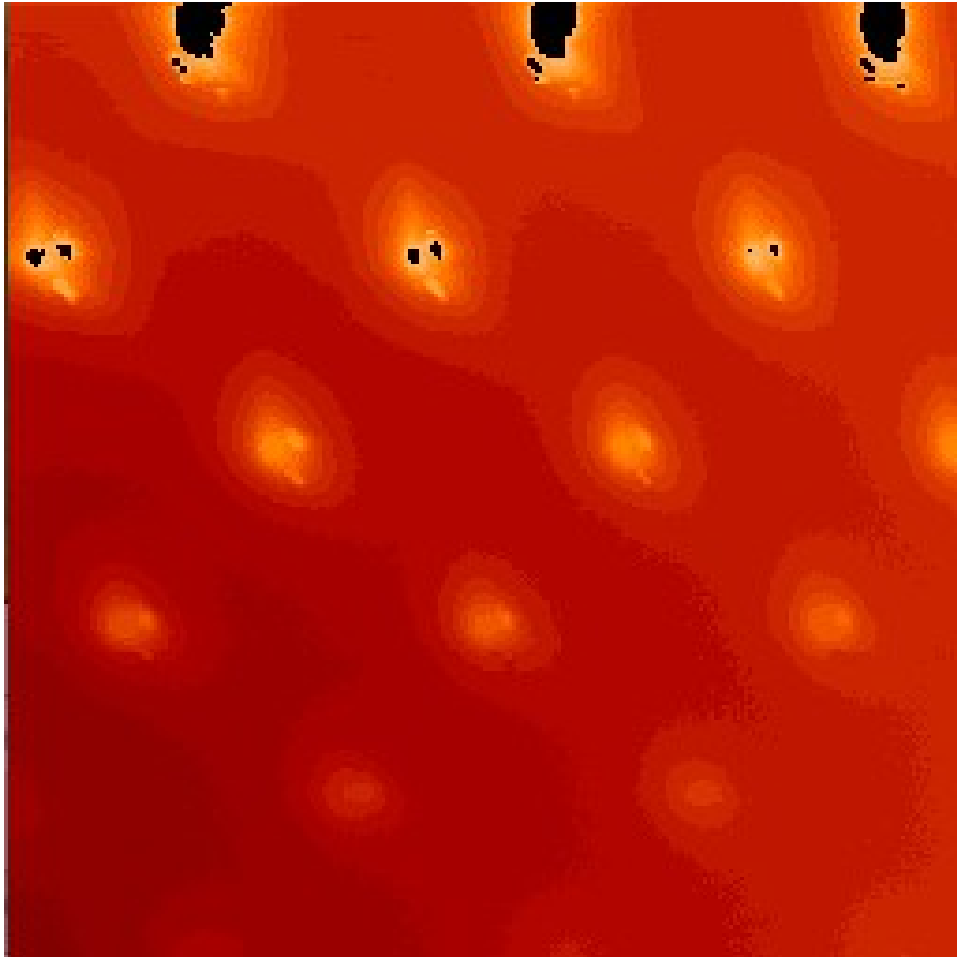
Issues

- Biggest issue is the use of BCR-STM format to view 3-D images. Relies on Commercial software interface – SIPS.
- This was an issue brought up in the preliminary review.
- Cannot open the data files to accurately assess the data product in 3-D.
- All other aspects of the posted data seem OK.
- All references to data product mention BCR file formats including .lbl files associated with each product

Tested two ways of viewing a file

NASA View Software

SPIP format reading BCR-file



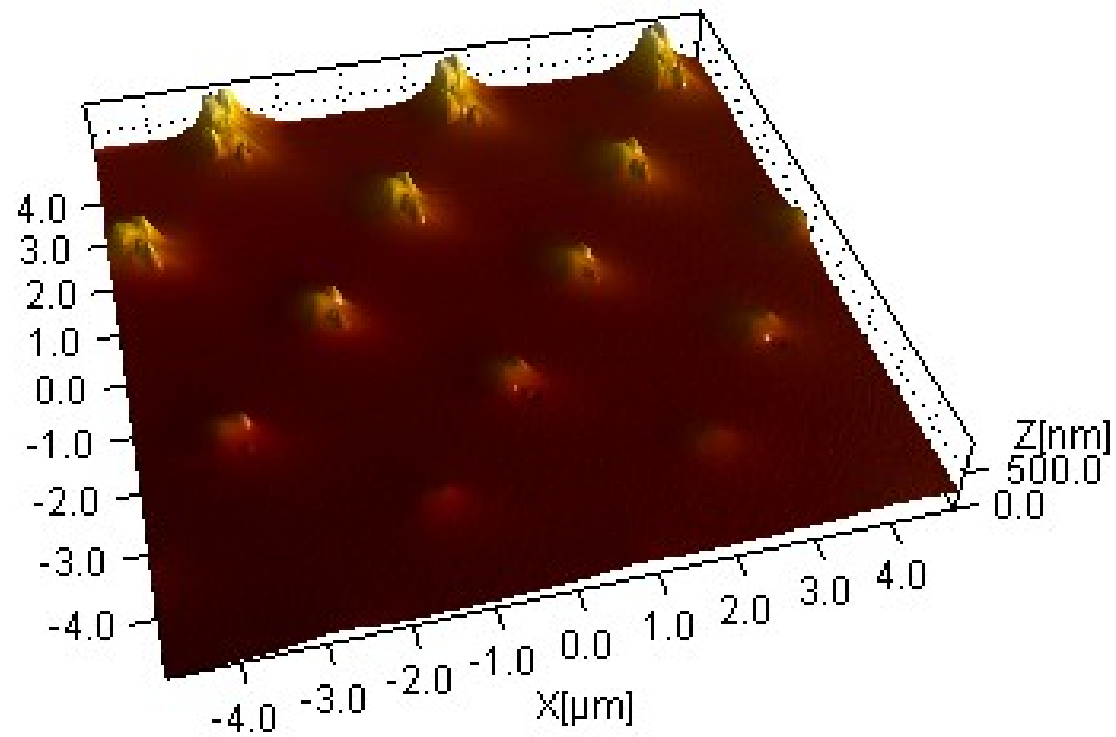
A lot more information available to the viewer in the BCR format

Information in formats

- NASA View format limited read of the information available in the image. However image is available in the labels
- All information immediately loaded up in BCR format

3D only in BCR format

img_1435401_1501400_001_zs 3D View.img



Mitigation

- Add a different file format to the files.
- Work with open source developer to enable NASA view software to process files.