

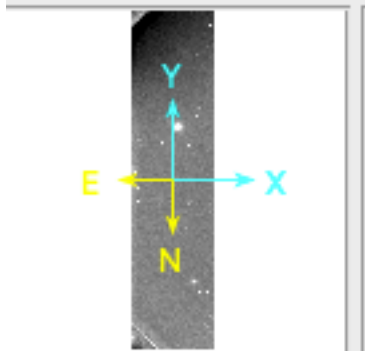
## Informal review of the Gemini-N and South data.

Beatrice Mueller

The documentation is good.

The display directions are not correct. The label indicates that the `north_clock_angle` is 0deg but that is not so. North is down and East is to the left (which is also not what is usually used where East is counter-clockwise from North). Either change the `north_clock_angle` to 180deg AND add the `east_clock_angle` attribute as 270deg, or change the `display_directions` to have North on the top and E to the left (e.g. change the vertical display direction to 'Top to Bottom'. ) See images below.

ds0



pds viewer  
label as written

pds viewer  
vertical display  
direction change

